

MONTHLY MEMBERSHIP PROGRESS REPORT

LOCATION CONNECTICUT

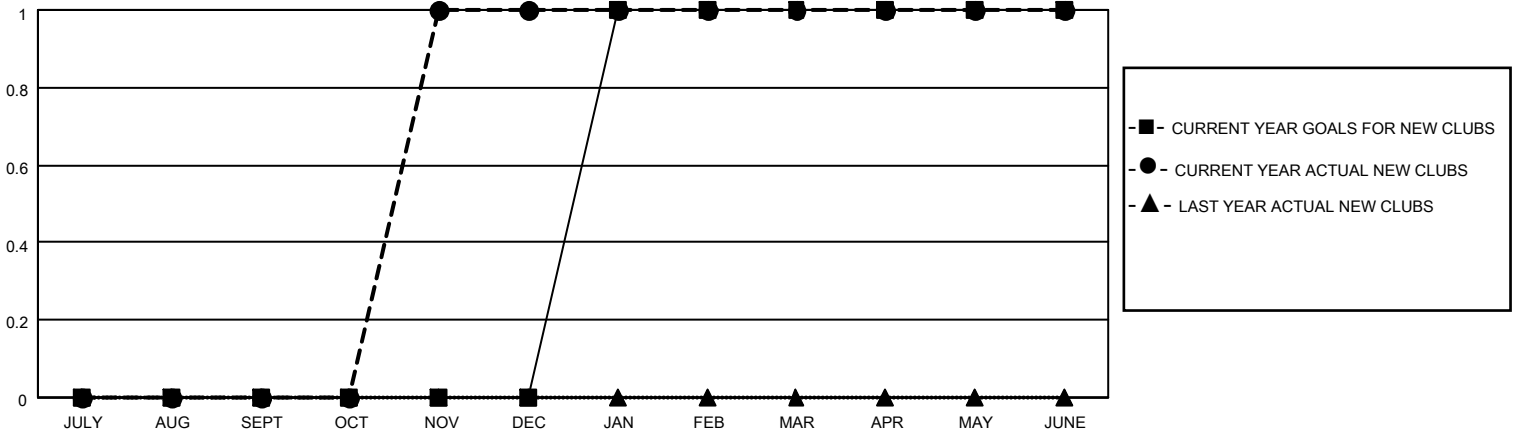
District 23 B

Results as of: 6/30/2022

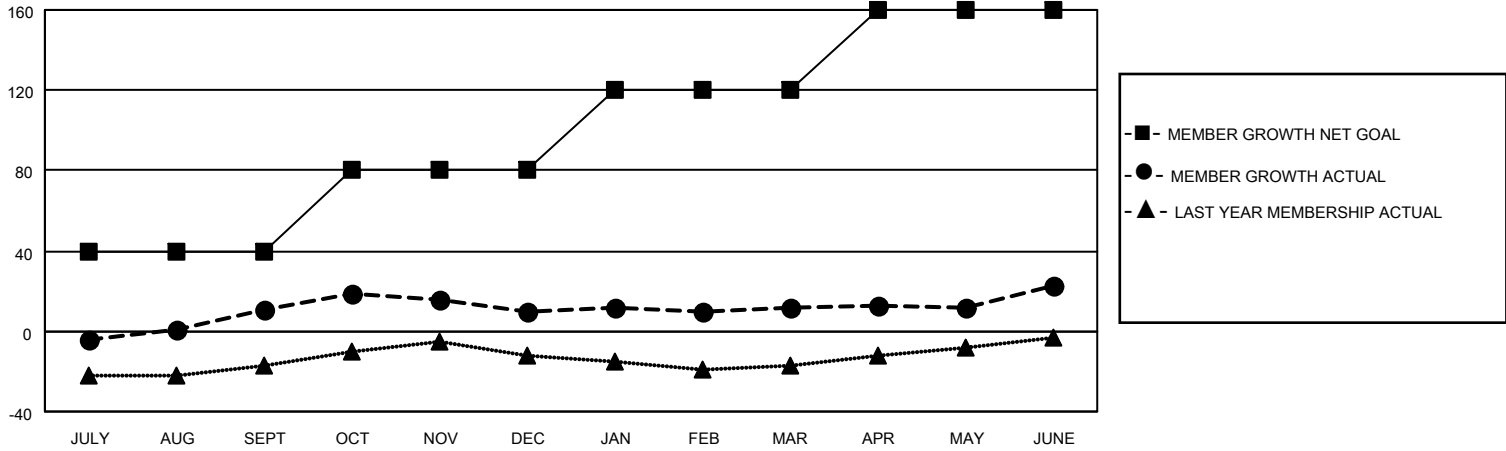
Clubs			
RESULTS FOR 2021-2022			
QUARTER	NEW CLUB GOAL	NEW CLUBS	DROPPED CLUBS
JULY/AUG/SEPT	0	0	0
OCT/NOV/DEC	0	1	0
JAN/FEB/MAR	1	0	0
APR/MAY/JUNE	0	0	0

Members			
RESULTS FOR 2021-2022			
QUARTER	MEMBER GROWTH NET GOAL	MEMBER GROWTH ACTUAL	DROPPED MEMBERS ACTUAL (including transfers)
JULY/AUG/SEPT	40	60	46
OCT/NOV/DEC	40	65	64
JAN/FEB/MAR	40	31	25
APR/MAY/JUNE	40	71	50

GOALS AND ACTUAL NEW CLUBS CUMULATIVE



GOALS AND ACTUAL MEMBERS CUMULATIVE



DROPPED CLUBS: 0	
DROPPED MEMBERS	
DECEASED	23
CLUB CANCELLED	0
OTHER	162
TOTAL	185

46 CLUBS OF 54 ADDED 1 OR MORE NEW MEMBERS

[CLICK HERE FOR CUMULATIVE MEMBERSHIP DATA](#)

<u>GENDER DISTRIBUTION</u>	
MALE	1,126 (62.87%)
FEMALE	664 (37.07%)
NON BINARY	0 (0.00%)
PREFER NOT TO ANSWER	1 (0.06%)
TOTAL FAMILY UNIT MEMBERS 359	
FAMILY MEMBERS PAYING HALF DUES 188	